

CAUTION: DO NOT SCALE DRAWINGS.
 THIS REPRODUCTION MAY BE AT A SIZE DIFFERENT THAN ORIGINALLY DRAWN. EXP ASSUMES NO RESPONSIBILITY FOR INCORRECT SCALING. UNAUTHORIZED REPRODUCTION OR REUSE IS STRICTLY PROHIBITED. NOT PUBLISHED. ALL RIGHTS RESERVED. EXP EXPRESSLY DISCLAIMS RESPONSIBILITY ARISING FROM UNAUTHORIZED USE OF THESE DRAWINGS AND NOTES. AUTHORIZATION MUST BE IN WRITING.
 © EXP, 2022

GENERAL NOTES:
 1. ALL DIMENSIONS ARE IN METERS (m) UNLESS NOTED OTHERWISE.
 2. CONTRACTOR TO VERIFY LOCATION AND SIZE OF ALL ABOVE AND BELOW GROUND UTILITIES AND SERVICES PRIOR TO CONSTRUCTION. UTILITIES SHOWN ON THESE DRAWINGS ARE APPROXIMATE ONLY. CONTRACTOR TO INFORM ENGINEER OF ANY DISCREPANCY.

LEGEND

---	PROPERTY LINE
- - - -	PROPOSED LOT LINE
---	EXISTING LOT LINE
---	EX. EDGE OF PAVEMENT
--- STM --- STM	PROPOSED STORM SEWER
--- STM --- STM	EX. STORM SEWER
---	PROPOSED STORM DITCH
---	EX. STORM DITCH
---	PROPOSED GAS LINE
---	EX. GAS LINE
---	PROPOSED HYDRO LINE
---	EX. HYDRO LINE
-1.2%	PROPOSED SLOPE
---	PROPOSED STORM CULVERT
---	PROPOSED ELEVATION
---	EXISTING ELEVATION
⊗ 225.52	BOREHOLE & DEPTH TO REFUSAL
⊗ 225.67	
⊗ BH-10	BOREHOLE & DEPTH TO REFUSAL
4.9m	
■ SIB	STANDARD IRON BAR / IRON BAR
318	
HP	HYDRO POLE
AN	GUY ANCHOR
⊗	ROCK OUTCROP
---	TREE LINE
---	EXISTING ELEVATION
---	PRIVATE PROPERTY
---	NO TRESPASSING
---	STORMWATER MANAGEMENT POND
---	RIP-RAP
---	GRAVEL ROADWAY WIDENING

12	ISSUED FOR MTO APPROVAL	RJ	OCT 26, 2022
11	ISSUED FOR TENDER	RJ	SEPT 20, 2022
10	ISSUED FOR ISC FUNDING SUBMISSION	CLC	NOV. 9, 2021
9	RE-ISSUED FOR MTO APPROVAL	CLC	AUG. 27, 2021
8	ISSUED FOR REVIEW	CLC	AUG. 9, 2021
7	REVISED OSPREY MIKAN INTERSECTION ISSUED FOR DISCUSSION	CLC	MAY 27, 2021
No.	Revision	By:	Date

ISSUED FOR MTO APPROVAL

Professional Seal	Professional Seal
Drawn By: RJ	Scale: 1:1750
Checked By: CLC	Date: OCT 26, 2022
Approved By: CLC	Date: OCT 26, 2022

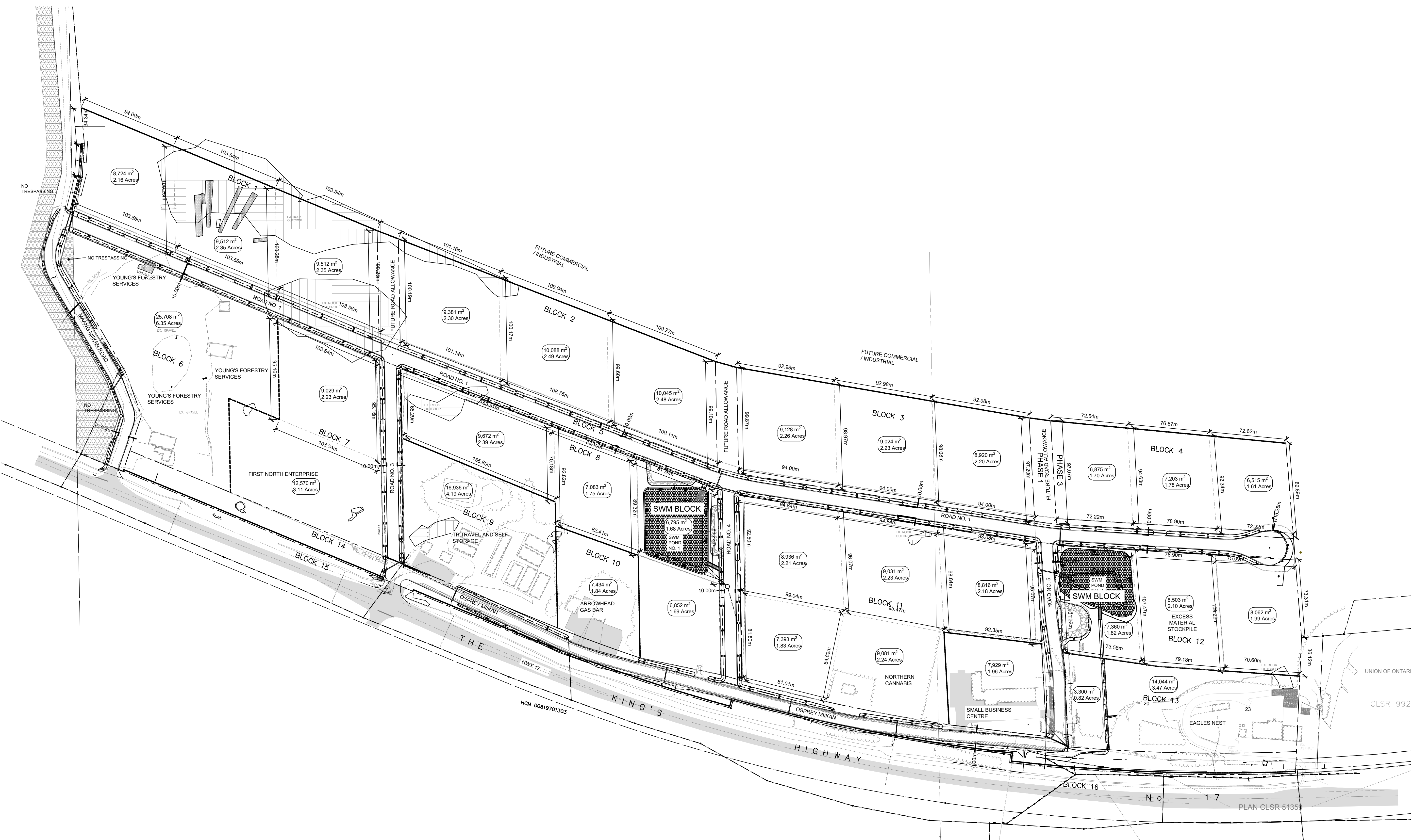
Date Printed: December 9, 2022
 File Name: NTB-00005241 Bineshii Business Park CIVIL BASE December 8, 2022

**NIPISSING FIRST NATION
 BINESHII BUSINESS PARK**

PART OF LOT 6 & 7
 TOWNSHIP OF COMMANDA
 DISTRICT OF NIPISSING

**OVERALL SUBDIVISION
 PLAN**

EXP Project No.	NTB-00005241
Dwg. No.	SP-1
Rev. No.	12



U:\A-2018\INF Projects\NTB-00005241-00 Nipissing First Nation - Bineshii60 - Project Execution2 - Design Drawings